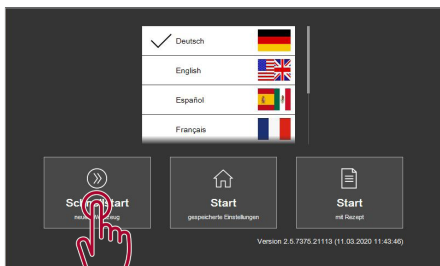
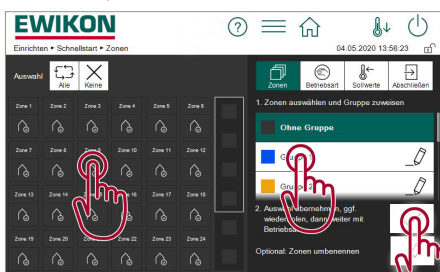


Schnellstart
neues
Werkzeug

Startscreen



Gruppen



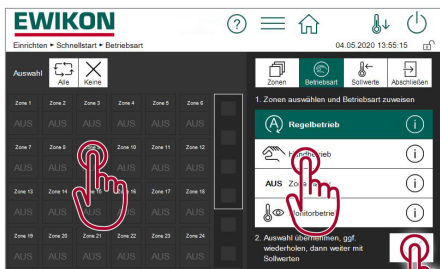
Zonenauswahl

Gruppe zuweisen

Bestätigen

!
Bei Auslieferung sind folgende Passwörter hinterlegt:
Bedienung: 111111
Einrichtung: 202020
Administration: 170266

Betriebsart



Zonenauswahl

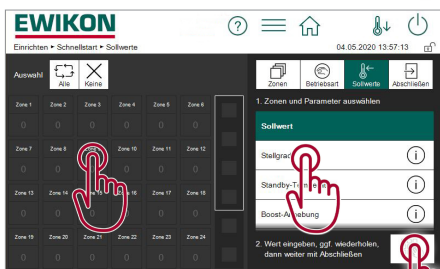
Betriebsart

Bestätigen

Betriebsarten:

- Regelbetrieb
- Handbetrieb
- Zone inaktiv
- Monitorbetrieb

Sollwerte



Zonenauswahl

Parameter

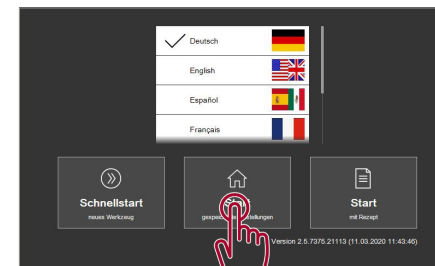
Wert eingeben

Sollwerte:

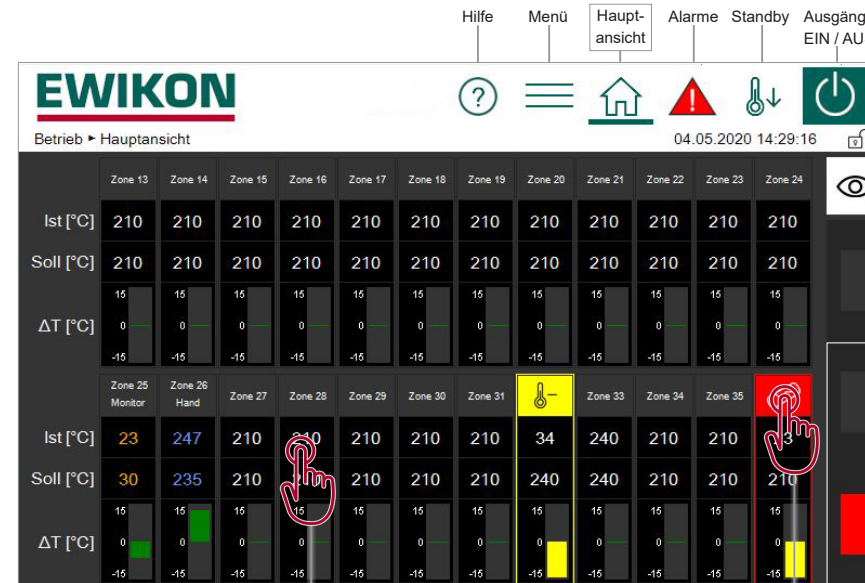
- Sollwert
- Stellgrad
- Standby-Temperatur
- Boost-Anhebung
- Boost-Dauer

Abschließen

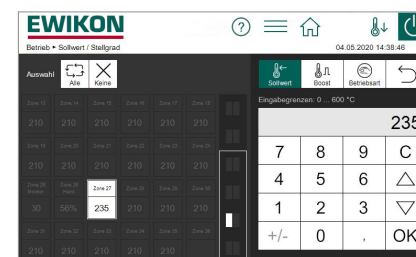
Startscreen



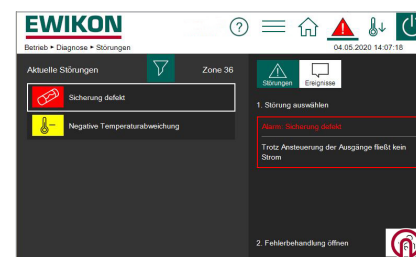
Start mit
gespeicherten
Einstellungen



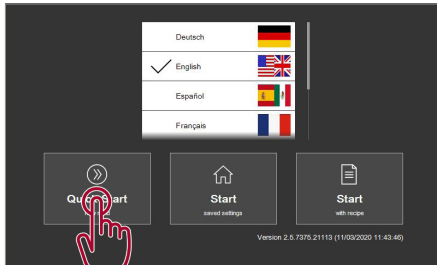
Sollwert, Stellgrad, Boost, Betriebsart



Diagnose mit Fehlerbehandlung



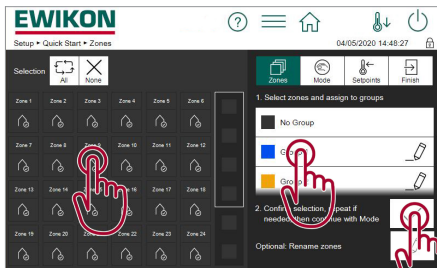
Start screen



Quick start new mould




Groups

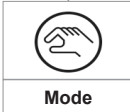


Zone selection

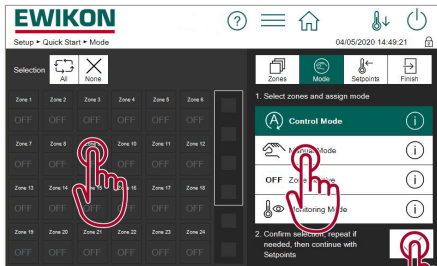
Group selection

Confirmation

 The controller is delivered with the following default password settings:
Operation: 111111
Configuration: 202020
Administration: 170266



Mode



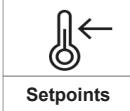
Zone selection

Mode

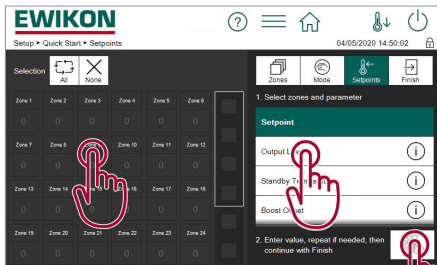
Confirmation

Modes:

- Control Mode
- Manual Mode
- Zone inactive
- Monitoring Mode



Setpoints



Zone selection

Parameter

Enter value

Setpoints:

- Setpoint
- Output Level
- Standby Temperature
- Boost Offset
- Boost Time

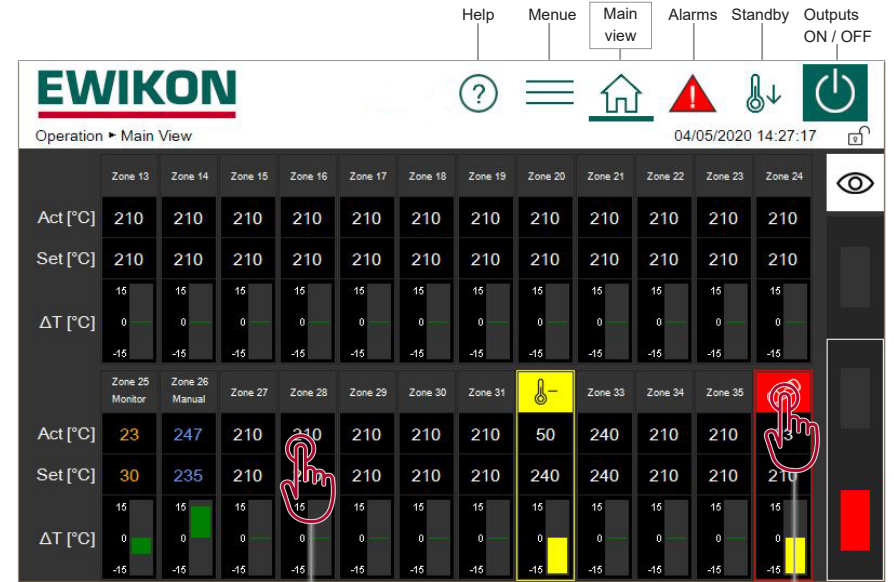


Finish

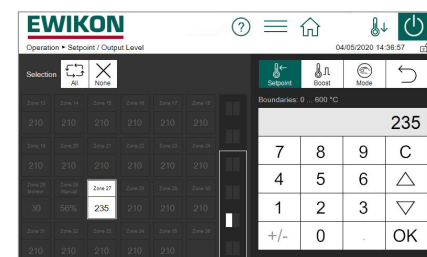
Start screen



Start with saved settings



Setpoint, Output Level, Boost, Mode



Diagnostics with troubleshooting

